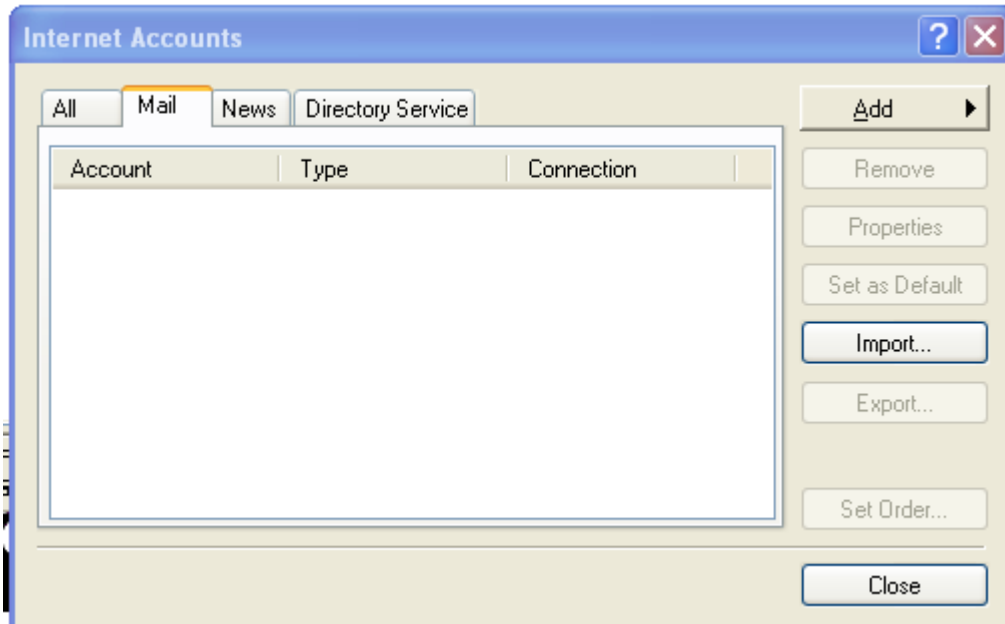
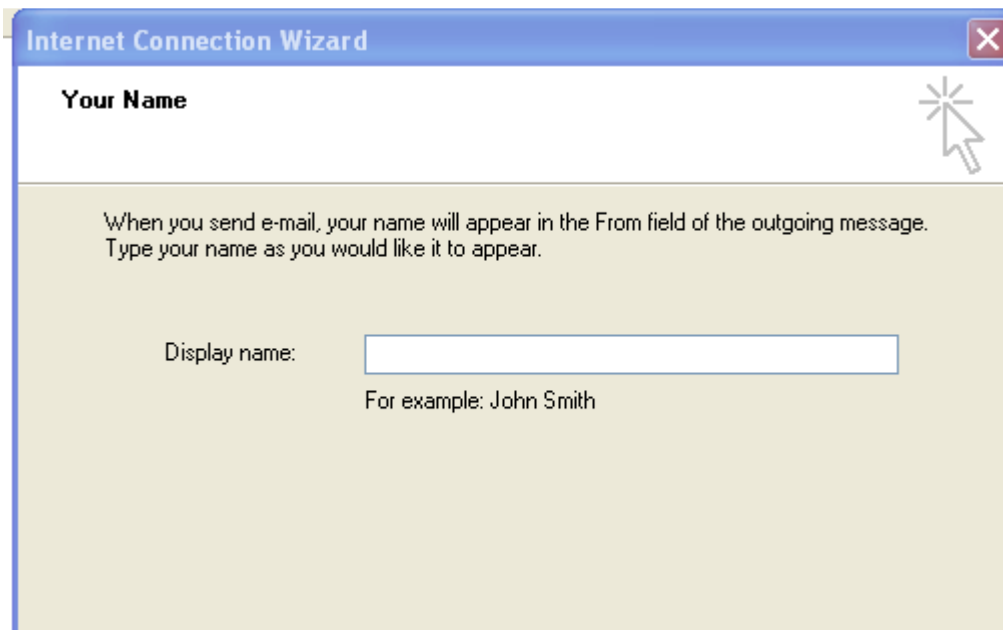


Outlook Express

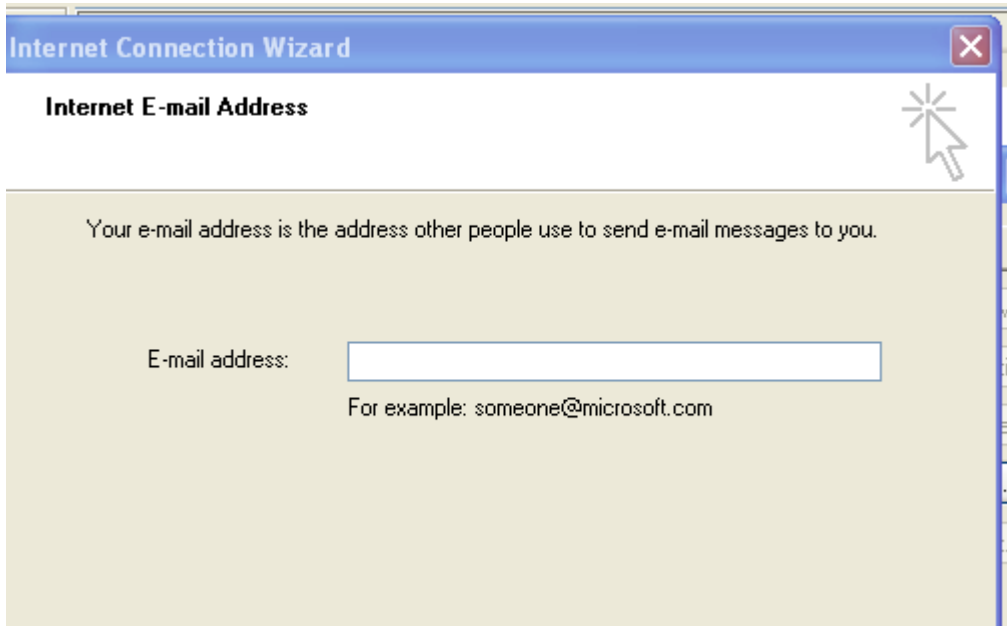
1. Click Start>All Programs (Programs)>Outlook Express. You can also go to Start>Run and type msimn.exe and click OK. If this is the first time you are running this program skip to Step 3
2. Click Tools>Accounts and click the Mail tab then click Add>Mail



3. Fill in your name and click next:

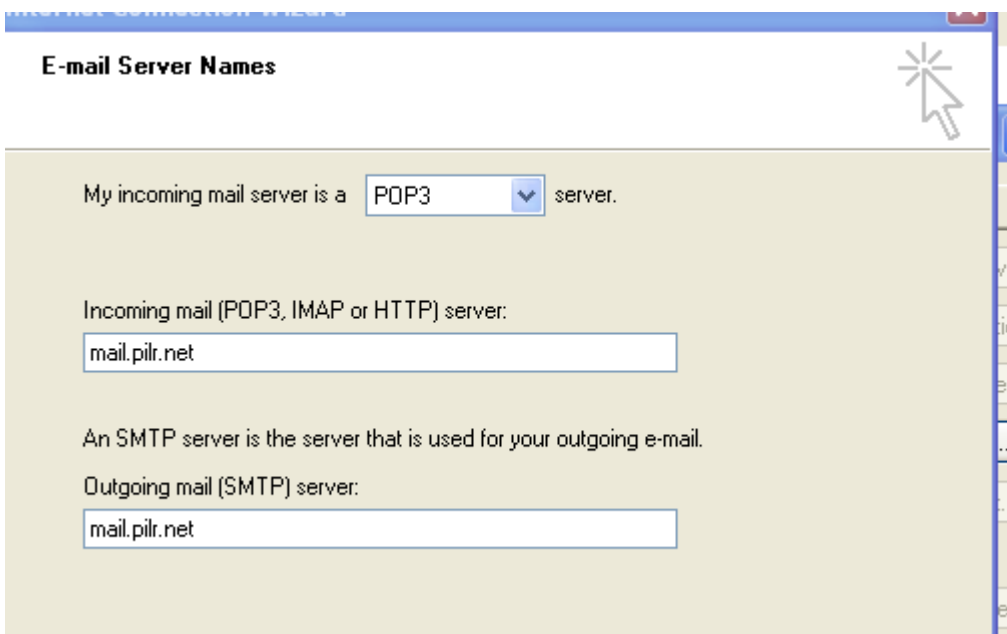


4. Fill in your email address and click next:




The screenshot shows a window titled "Internet Connection Wizard" with a close button (X) in the top right corner. The main heading is "Internet E-mail Address". Below the heading, there is a text box with the instruction: "Your e-mail address is the address other people use to send e-mail messages to you." Underneath, there is a label "E-mail address:" followed by an empty text input field. Below the input field, there is an example: "For example: someone@microsoft.com". A mouse cursor is pointing at the top right corner of the window.


5. The incoming mail server is a POP3 server.
6. Settings for the incoming and outgoing mail server are mail.pilr.net
7. After filling that out click next



The screenshot shows a window titled "Internet Connection Wizard" with a close button (X) in the top right corner. The main heading is "E-mail Server Names". Below the heading, there is a text box with the instruction: "My incoming mail server is a" followed by a dropdown menu showing "POP3" and a downward arrow, and the word "server." Below this, there is a label "Incoming mail (POP3, IMAP or HTTP) server:" followed by a text input field containing "mail.pilr.net". Below that, there is a label "An SMTP server is the server that is used for your outgoing e-mail." followed by a label "Outgoing mail (SMTP) server:" and a text input field containing "mail.pilr.net". A mouse cursor is pointing at the top right corner of the window.

8. The account name will be your full email address (example: temp@pilr.net)
9. Enter the password that was provided to you and click next.

Internet Connection Wizard 

Internet Mail Logon 

Type the account name and password your Internet service provider has given you.

Account name:

Password:

Remember password

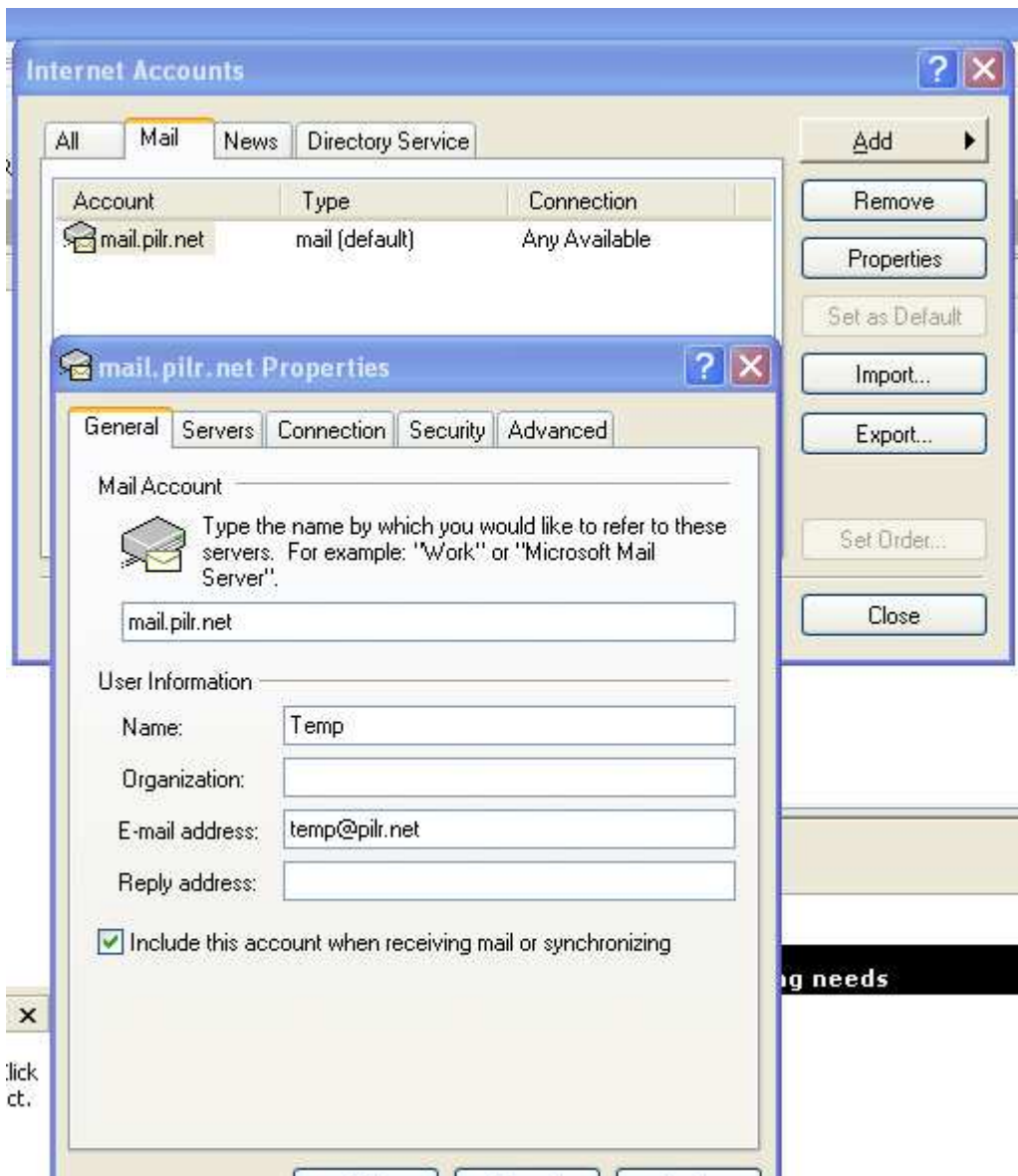
If your Internet service provider requires you to use Secure Password Authentication (SPA) to access your mail account, select the 'Log On Using Secure Password Authentication (SPA)' check box.

Log on using Secure Password Authentication (SPA)

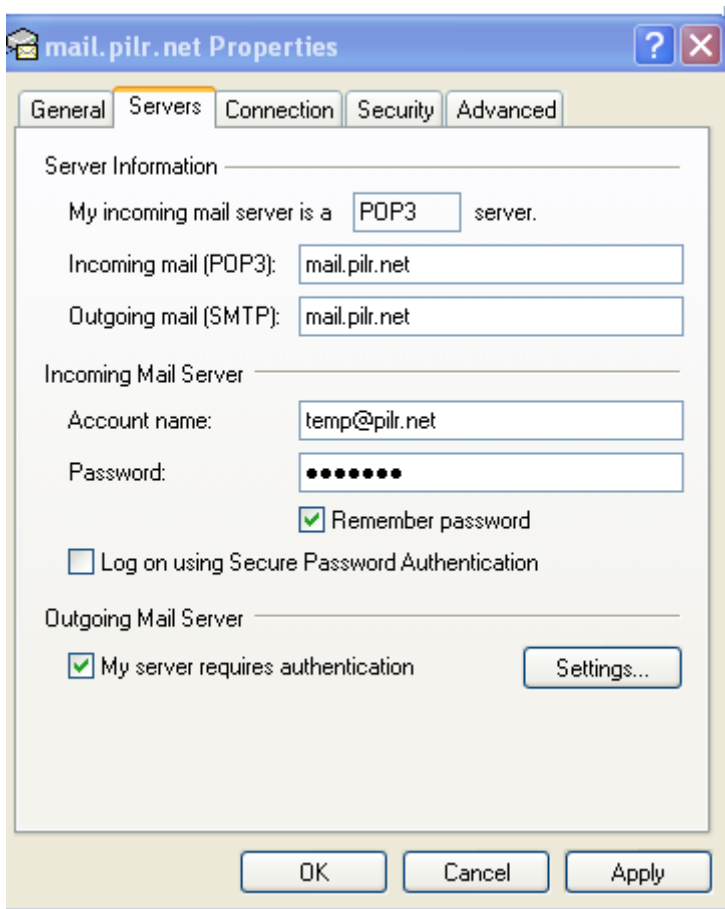
10. Click Finish

11. Click the account you just created and click on properties.

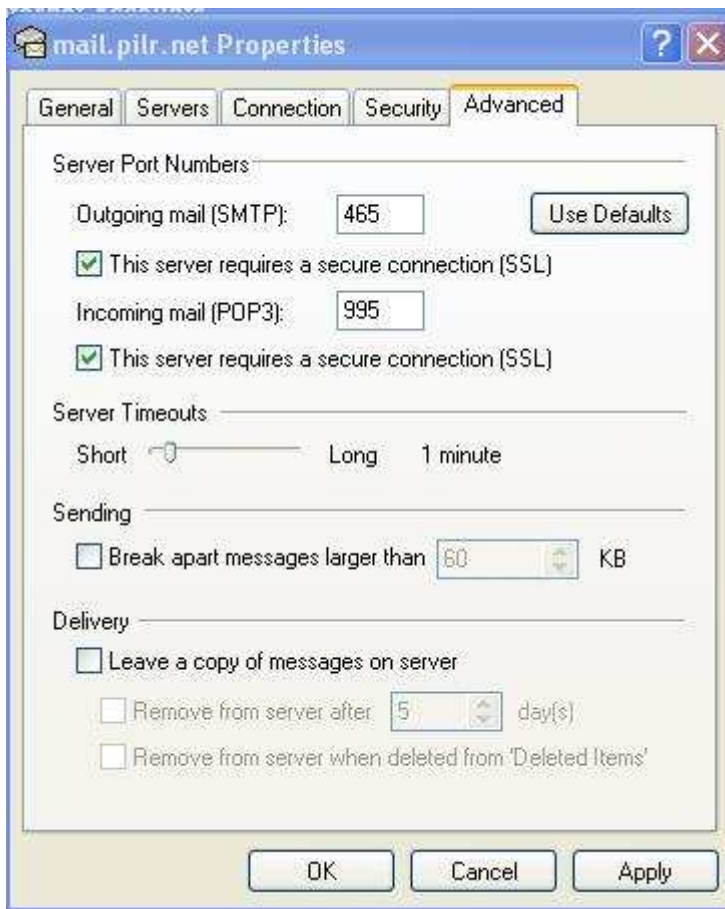
12. The properties for your domain will come up.



13. Click on the Servers tab and check the box that says “My server requires authentication” and click Apply.



14. Click on the Advanced tab and check the box under Outgoing mail (SMTP) and Incoming mail (POP3) that says "This server requires a secure connection (SSL). Make sure the SMTP number says 465 and the POP3 number says 995. If the number doesn't change automatically then type in the correct number.



15. Click OK and you are now finished with you mail setup.